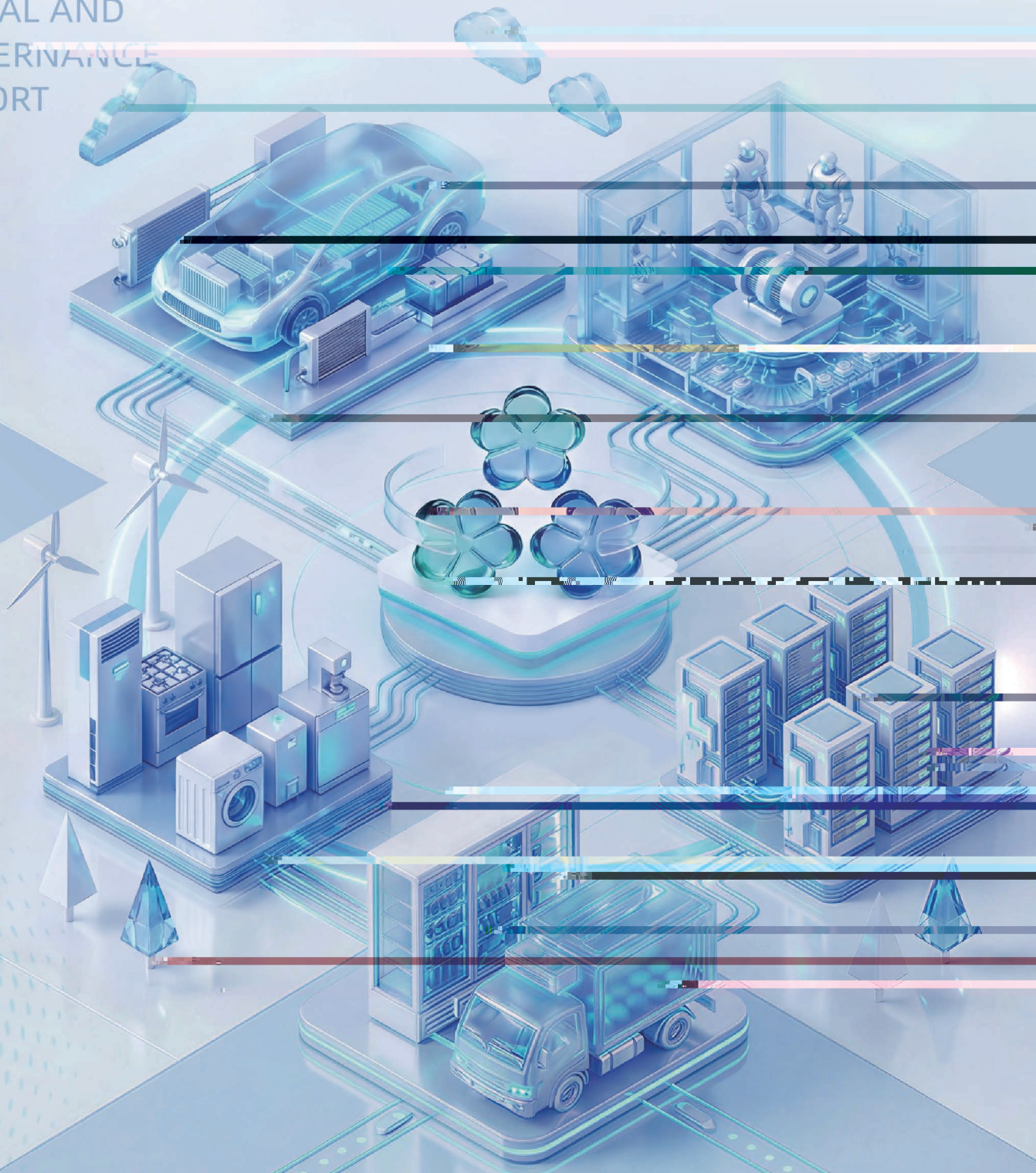
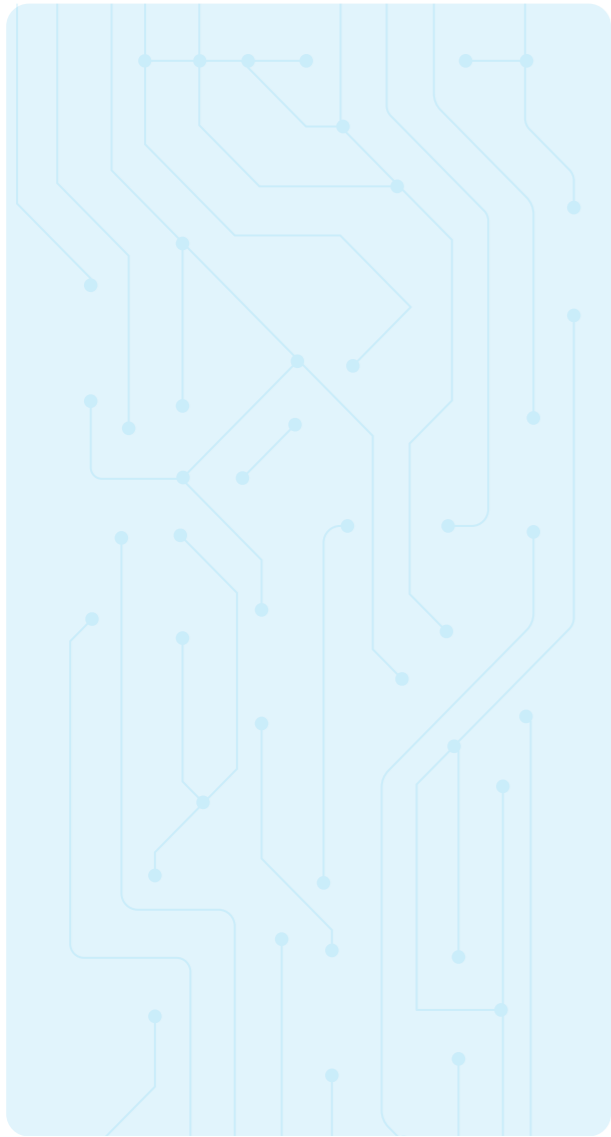


# 三花智控 环境、社会和公司治理报告

ENVIRONMENTAL  
SOCIAL AND  
GOVERNANCE  
REPORT





---

**00%**

---

EEG

---

EDGE

---

**%**

---

---

---

---

---

EEG

EEG

Zffbe://i i i .l\ezUla\_

Zffb://i i i .el eWU

Zffbe://i i i .Z]W`W e.Z]

Zffb://i i i .U [ Xa.la\_ U

002050.EL 2050.HK

219

2025 1 1 2025 12 31

eZU@l\ezUla\_

2024 4 2026 1

17

3

C2

2025 1 1

EEG

GEEB GDI

2021

GDI

EDGE

EEG

2025





002050.EL 2050.HK

EEG



2025 年 1 月 1 日 至 2025 年 12 月 31 日

4

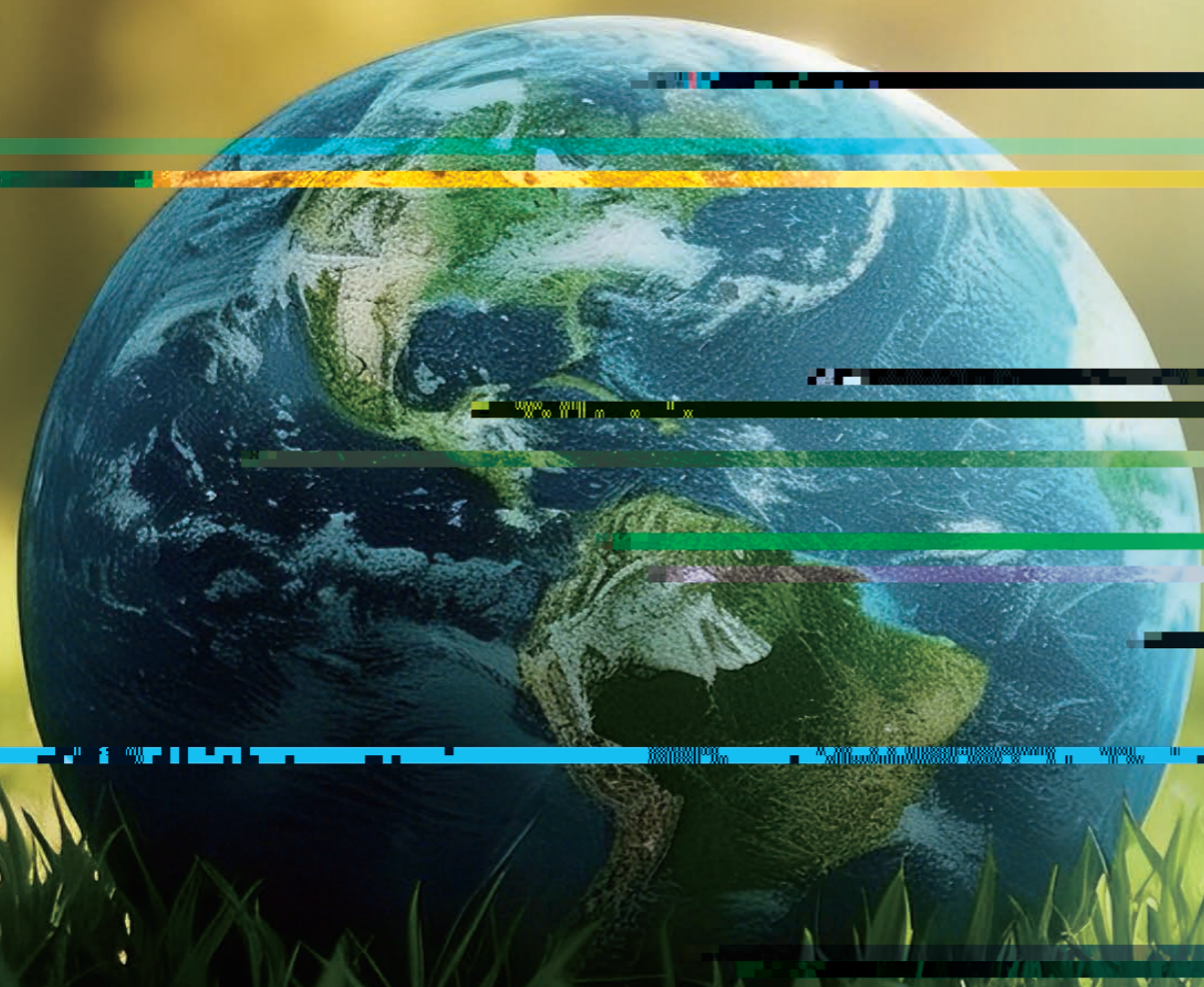


EEG





01



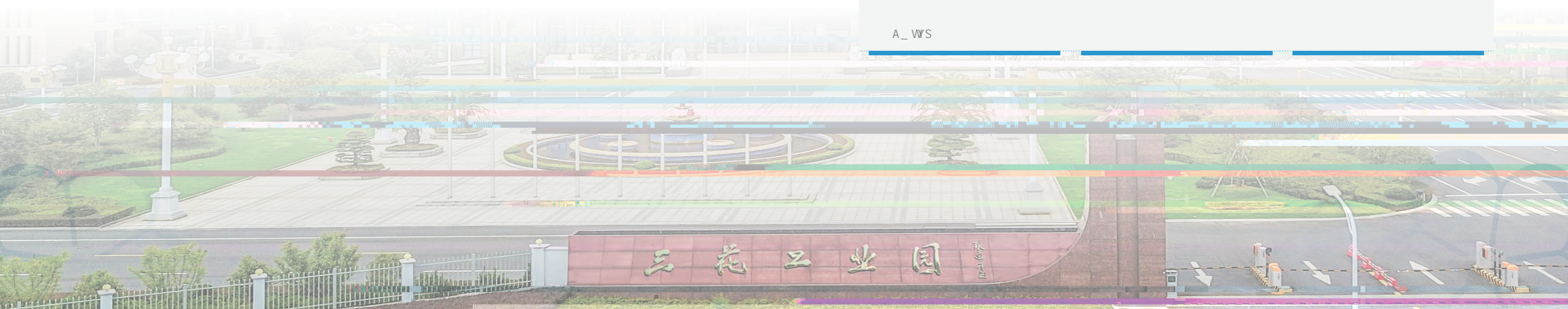
1994

%

LHEJA@G EA@HGA I@FE>>IGE@F CA@FDA >E CA., >FD.

002050.EL 2005  
2050.HK 2025

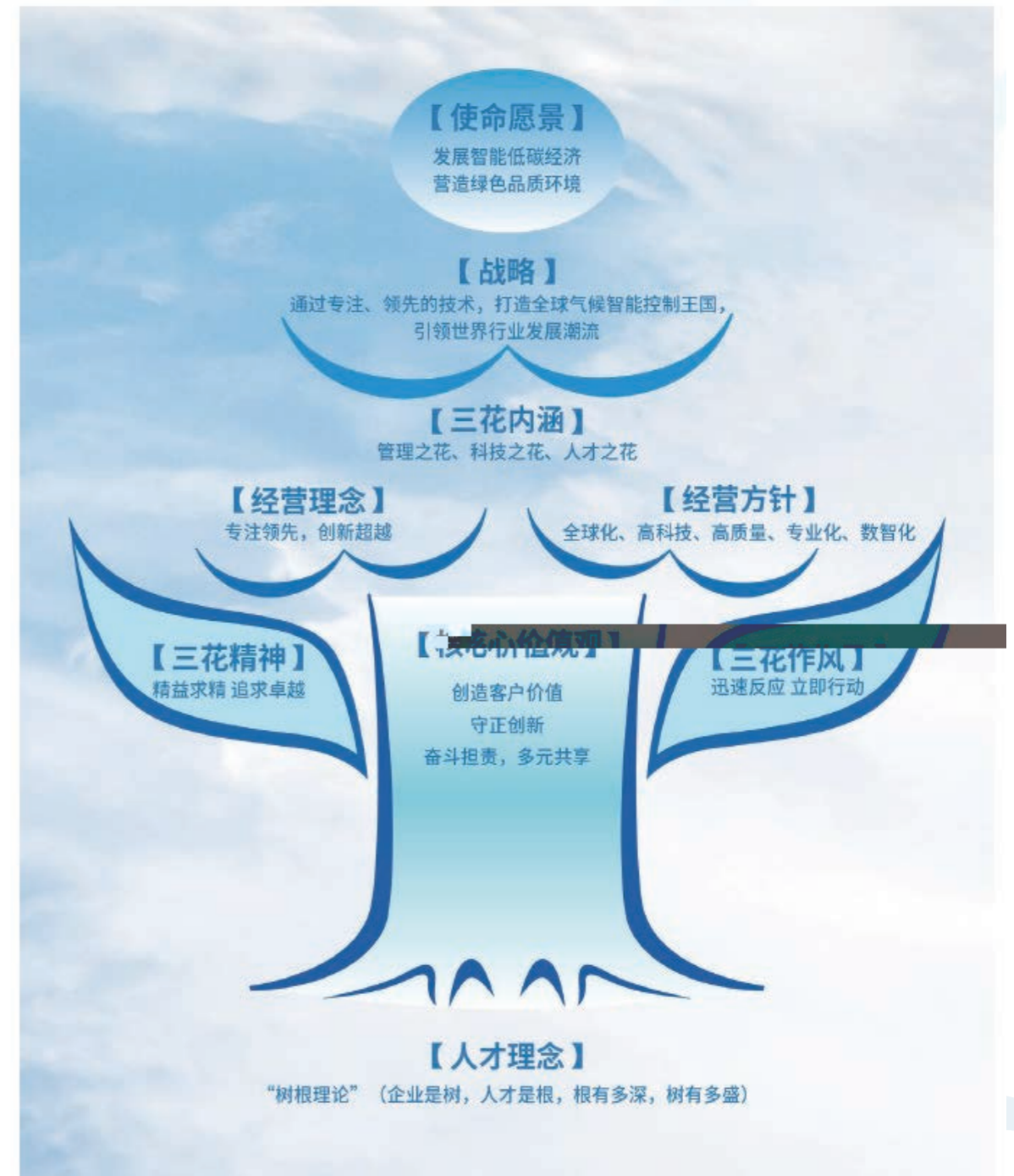
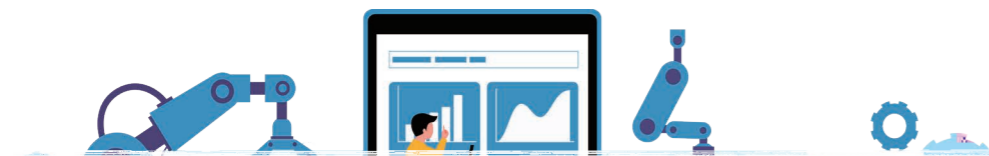
A\_W/S





2025 12 31

80



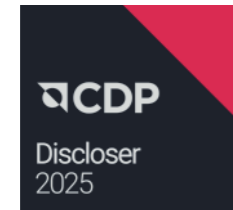
# 02%

EcoVadis



G@G'aTS^Ca\_bSUF

# %



CDP

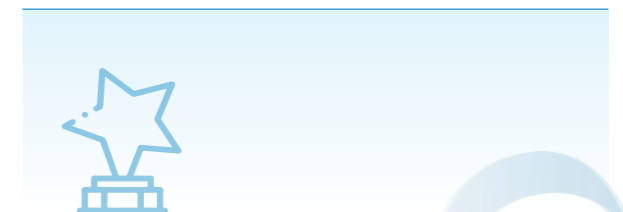
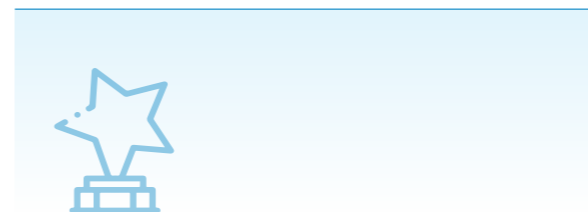
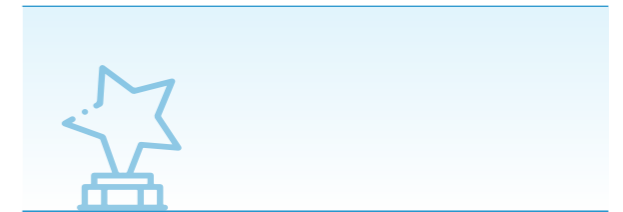
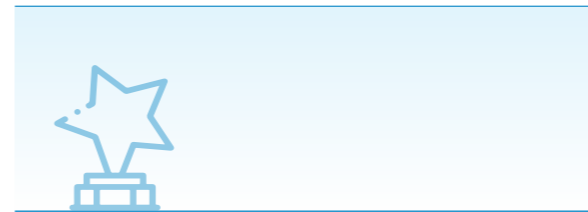
ESG



ESG

Wind ESG

BB







EEG 1 EEG 2024 2025 EEG 2024 EEG

2025 " EEG " " "

EEG EEG

EEG

2025 EEG GDI

E1 IEEB ? ECI EEG E1 EEG IFDE

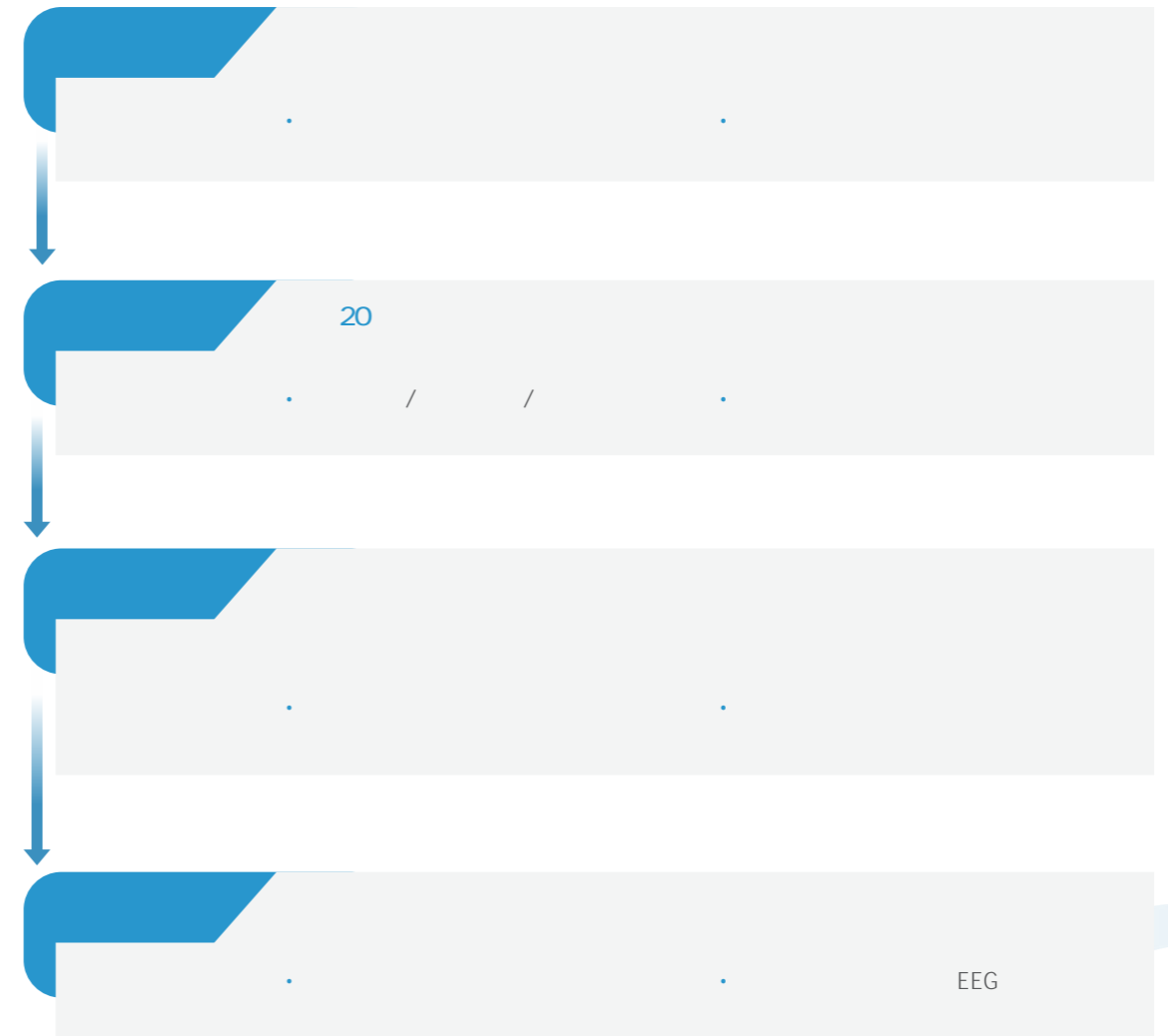




%



2025 EEG EEG EEG EEG

EEG EEG

EEG EEG



	・ ・ ・ ・ ・	・ ・ ・
	・ ・ ・ ・	・ ・ ・ ・
	・ ・ ・ ・	・ ・ ・ ・ ・ ・ ・ ・
	・ ・ ・ ・	・ ・ ・ ・

	・ ・ ・ ・ ・ ・ ・ ・ ・ ・ ・	・ ・ ・ ・ ・ ・
	・ ・ ・ ・	・ ・ ・
	・ ・ ・ ・ ・	・ ・ ・ ・

EEG

20

0 1

2 5

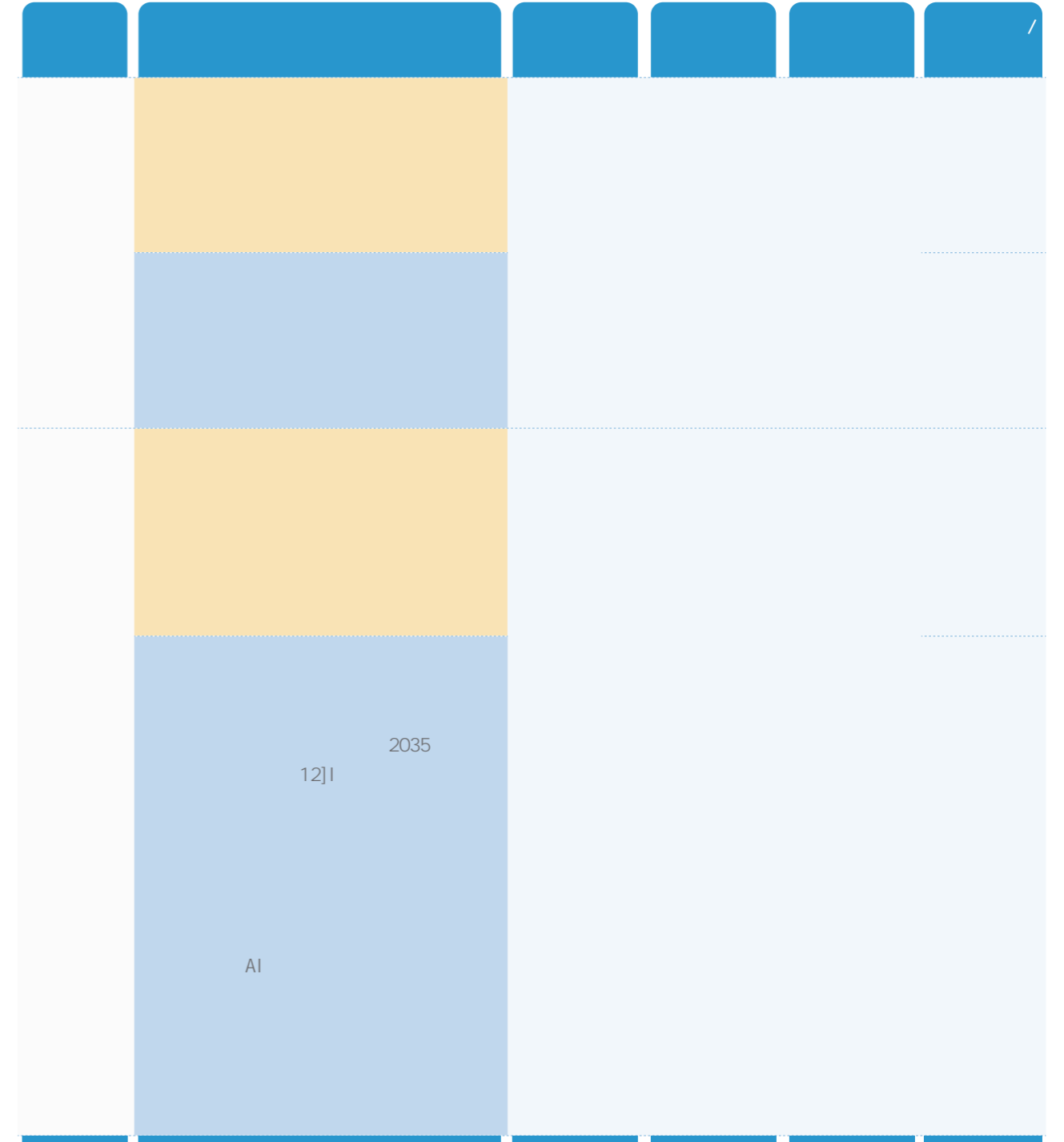
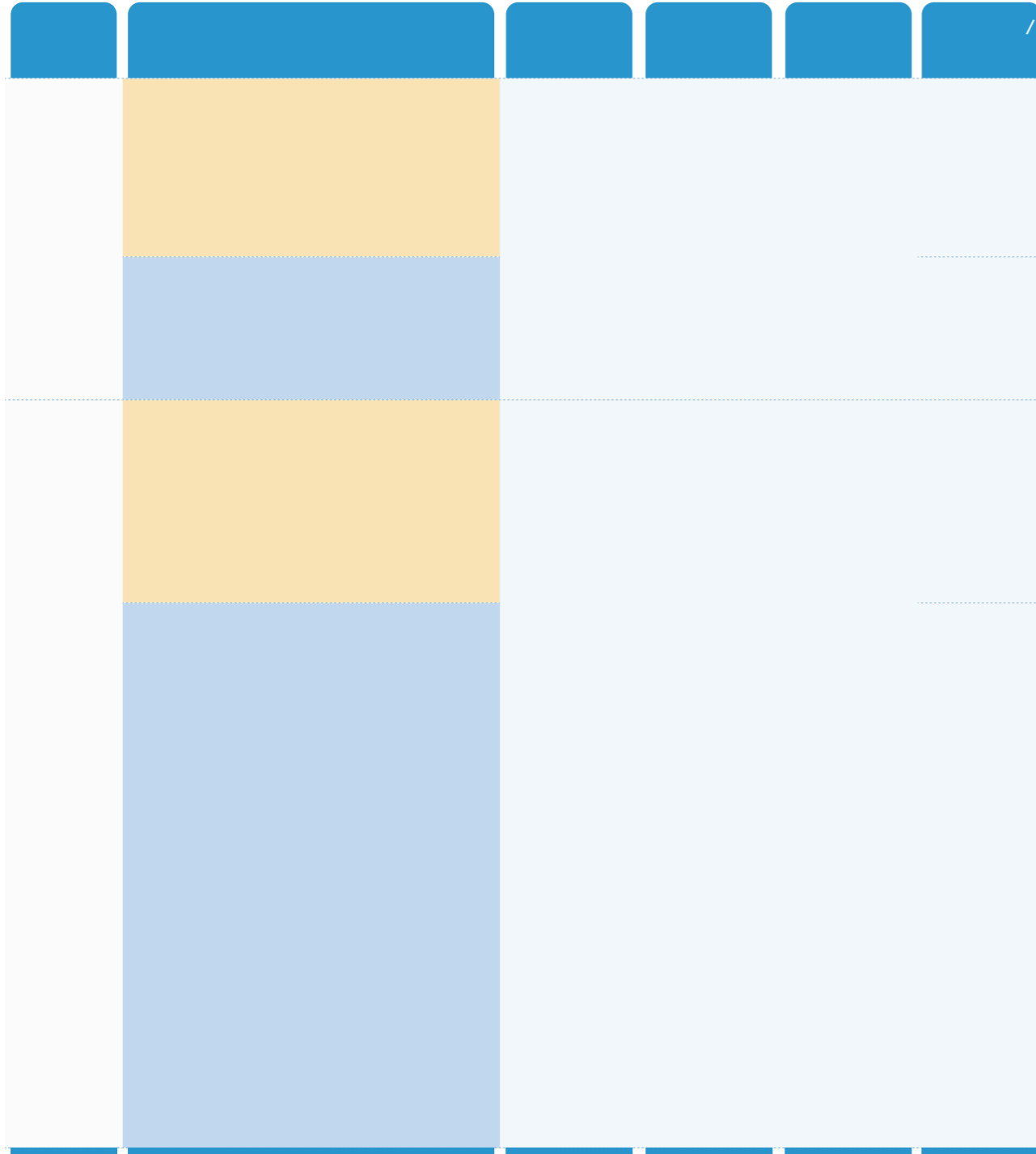
6

EEG

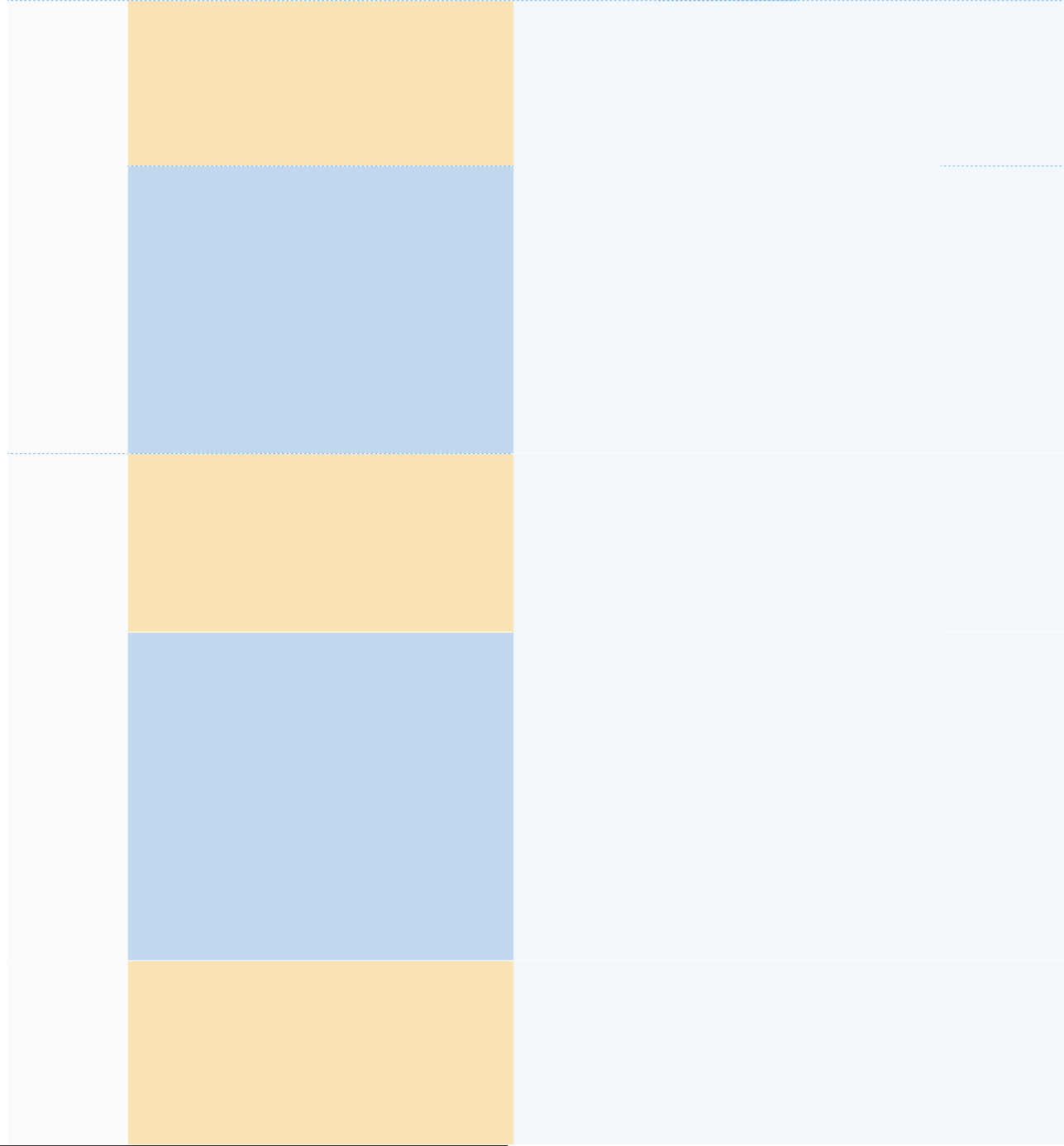
2025

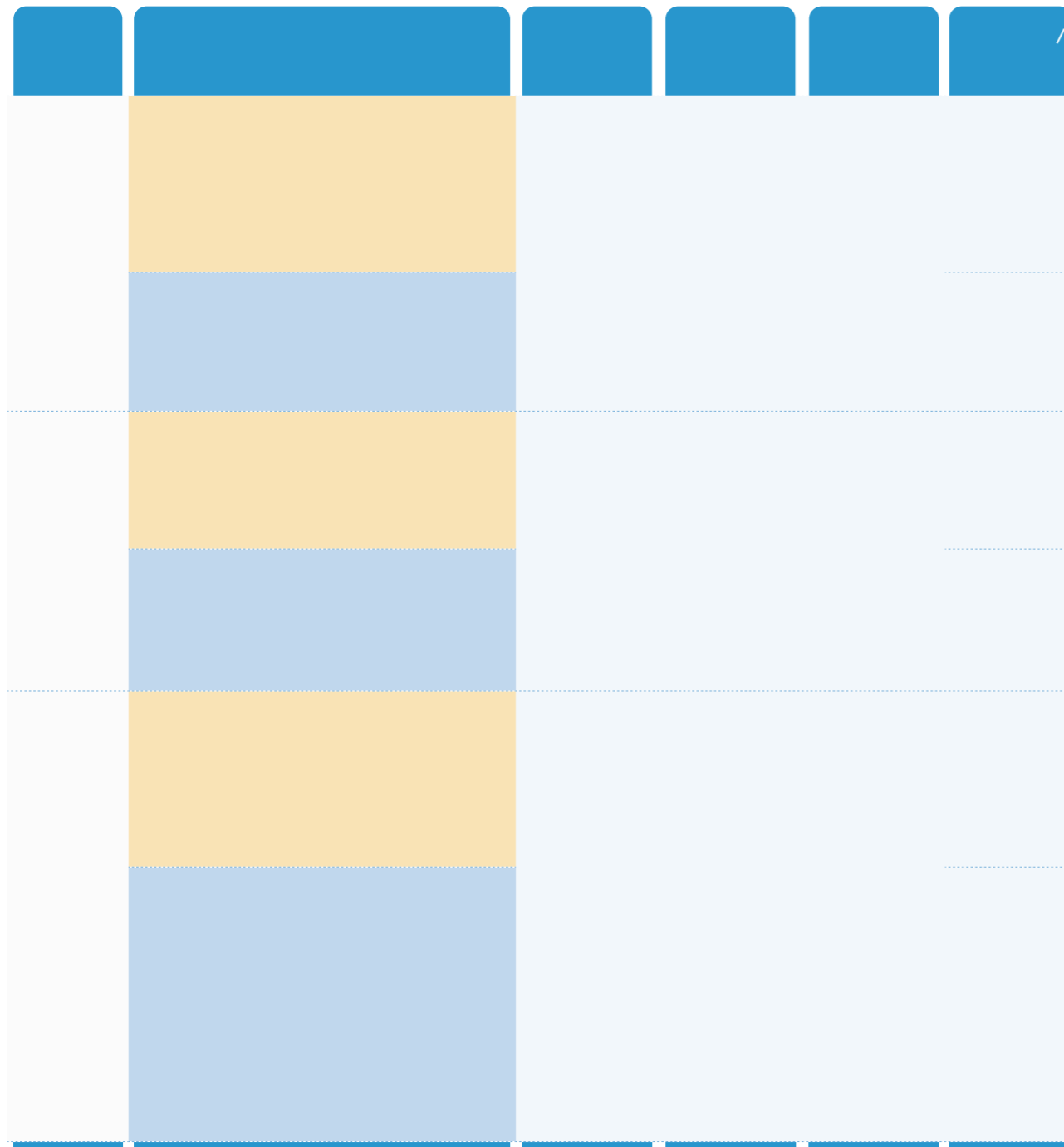
103

%







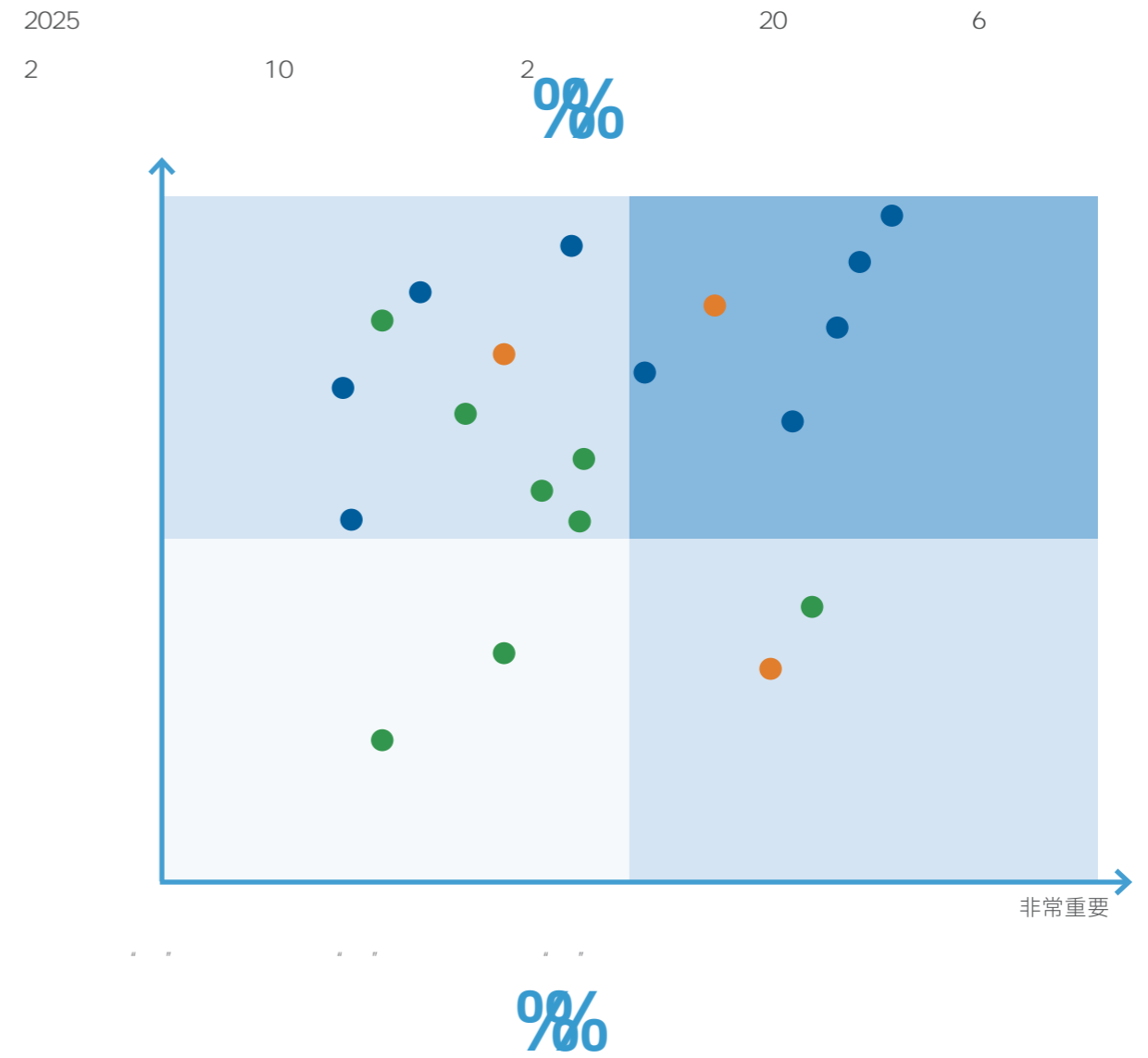


EEG

/

3

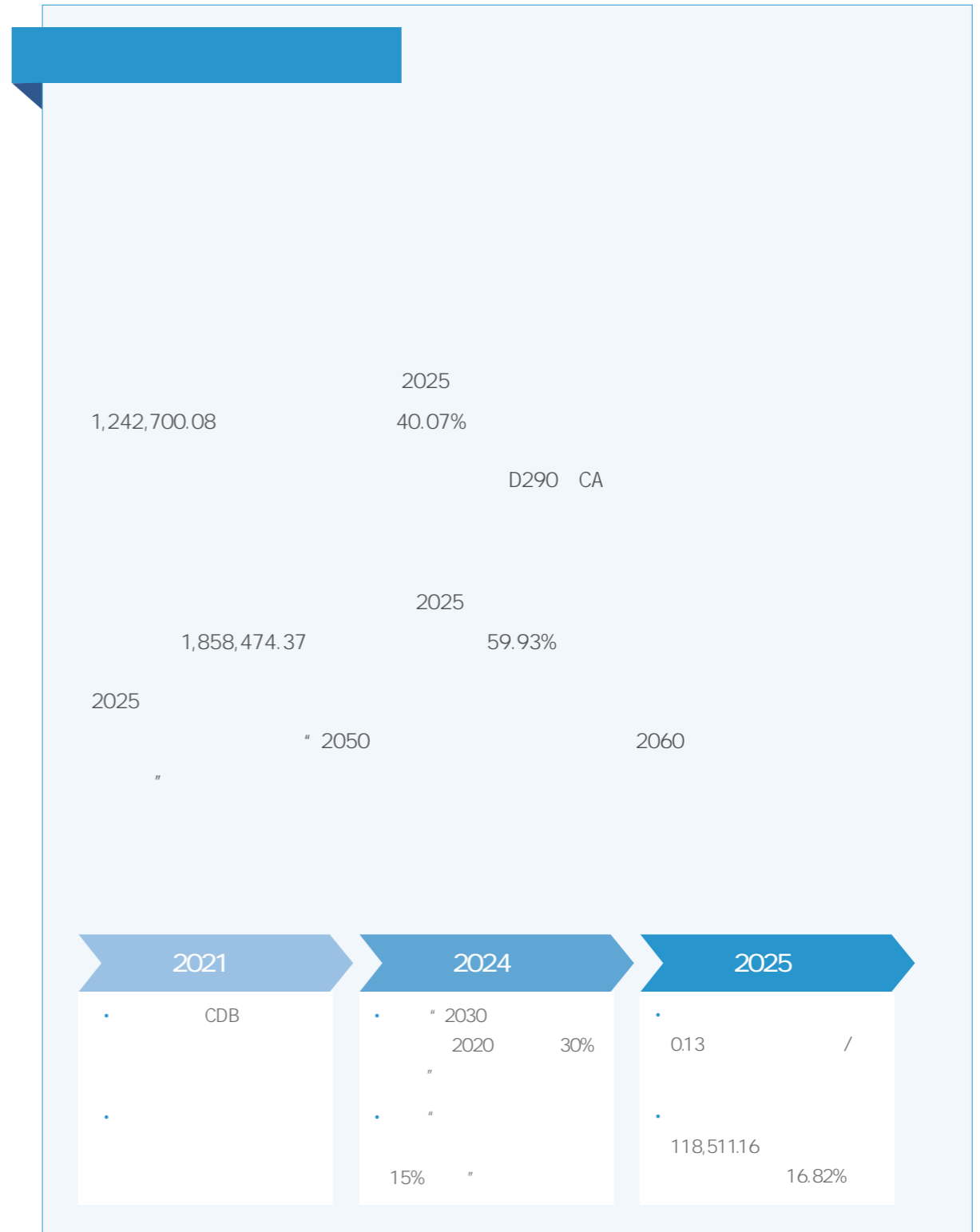
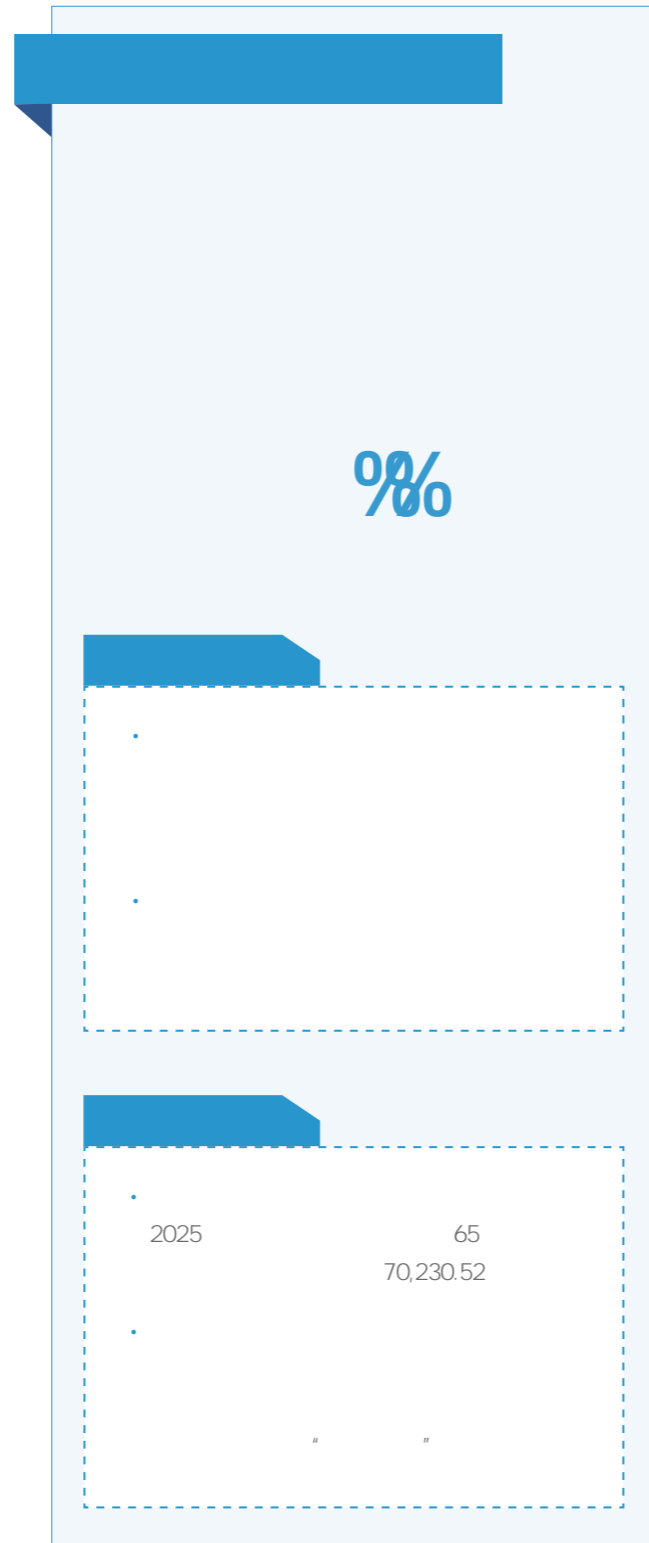
/



2025	2024		
			2025
—			

		7 经济适用的清洁能源			14 气候行动	3 良好健康与福祉			10 减少污染	16 和平、正义与强大机构	
			HA Ce								
	2030 2020 30%	15%	2030 HA Ce 2024 10%	2030 2024 10%	2030 25%	2024 2026 5%	2030 2022 30%	2030 95%	2030 38%	100%	100%
2025	2025 0.13 / 2020 0.15 / 18.70%	16.82%	2025 0.0056 / 2024 0.0050 / 10.49%	2025 0.0131 / 2024 0.0139 / 5.85%	24.29%	2025 0.21% / 2024 0.30% / 30%	2025 35.48 2022 30.68 16%	62.29%	35%	100%	100%





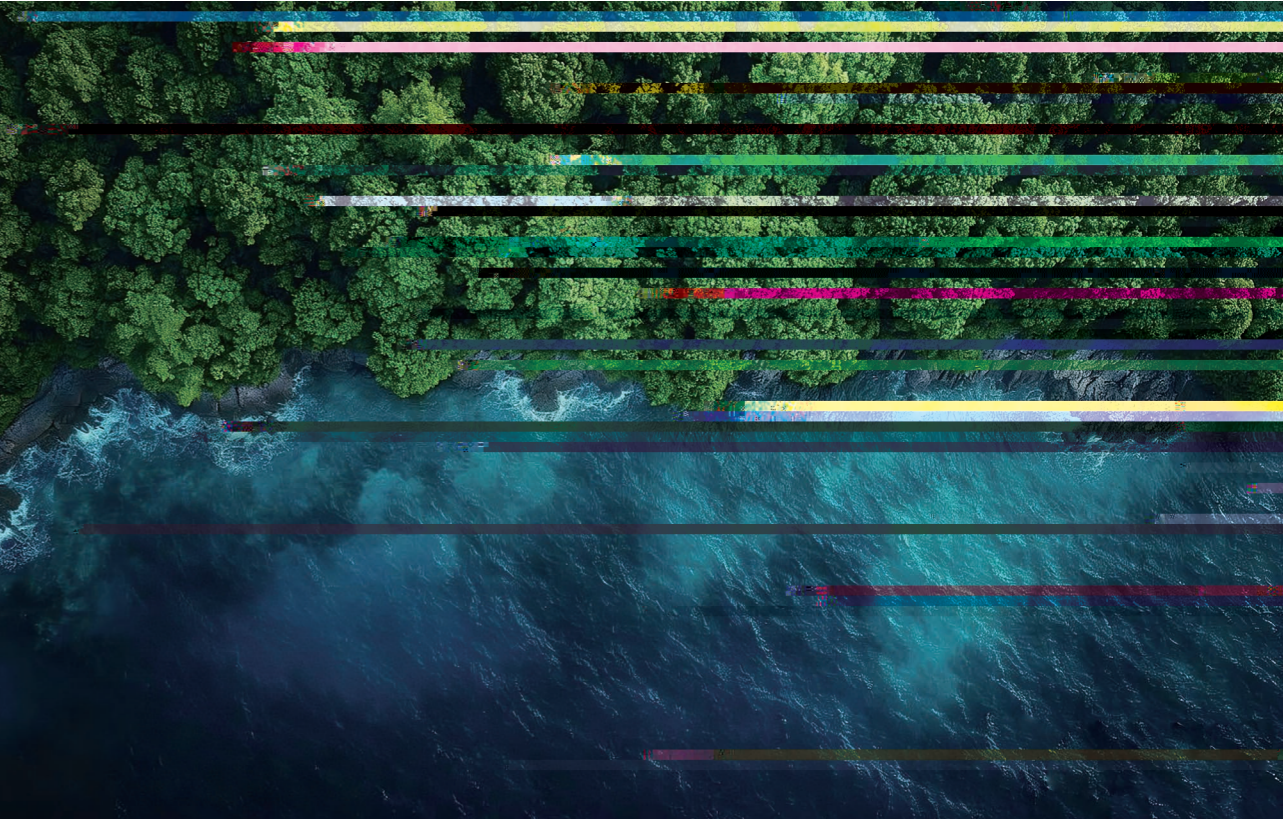
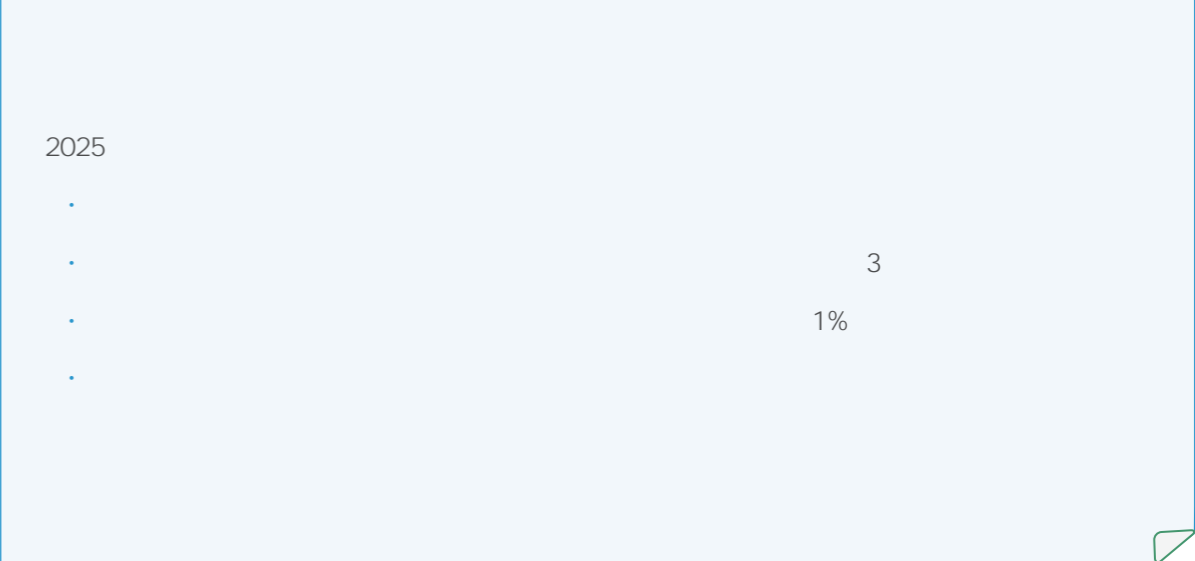


• 2024 3: 2019	IEA 14067: 2018 3	IEA 14064-
	" "	

• 2025	IEA 14064-1: 2018 IEA 14064-3: 2019	1 3
--------	--	--------

•		
---	--	--

【案例】 不锈钢四通阀——将绿色低碳贯穿产品设计、生产与使用



【案例】三通安全截断阀——以“一阀多能”赋能热回收空调系统绿色升级

2025 " " " "

2025

· K

· 4

· 4,800

A2>

EEG



2025

【案例】智能厨电泵阀组件——以模块化绿色设计引领厨房电器可持续升级

2025 " DBF AI E " "

2025

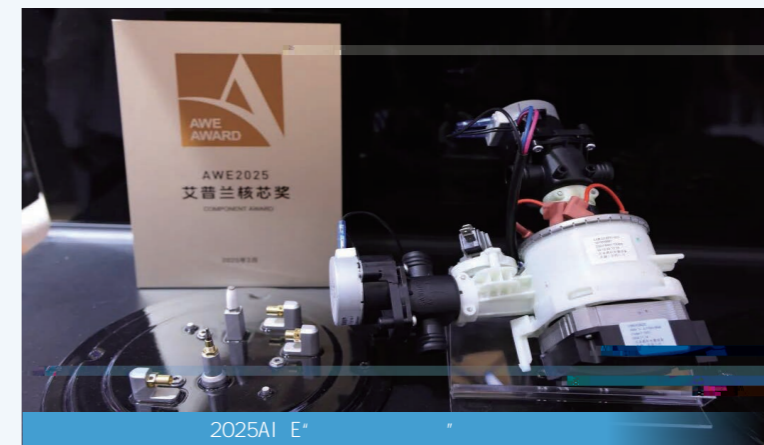
·

·

·

·

· " "





05

2

700

2025



•	—	C/LEH 077 2025	8	16	78	
						GB/F 45775 2025
		GB/F 45780 2025	2			
		2023—2025				
		IEA/FC 86	"		"	EgTCa_ _ [ffWW EC
	AHDI					
•	—			"		"
					-40	
•	D290	GI B			37%	20%
	CDG			BGE	1.2	
•	DEEBEEK	AI	12			
	BI	AI				
•			"	" "	" "	"
					"	"

Blank slide template with a blue header bar and a 2x4 grid of placeholder boxes, each containing a star icon on a pedestal.

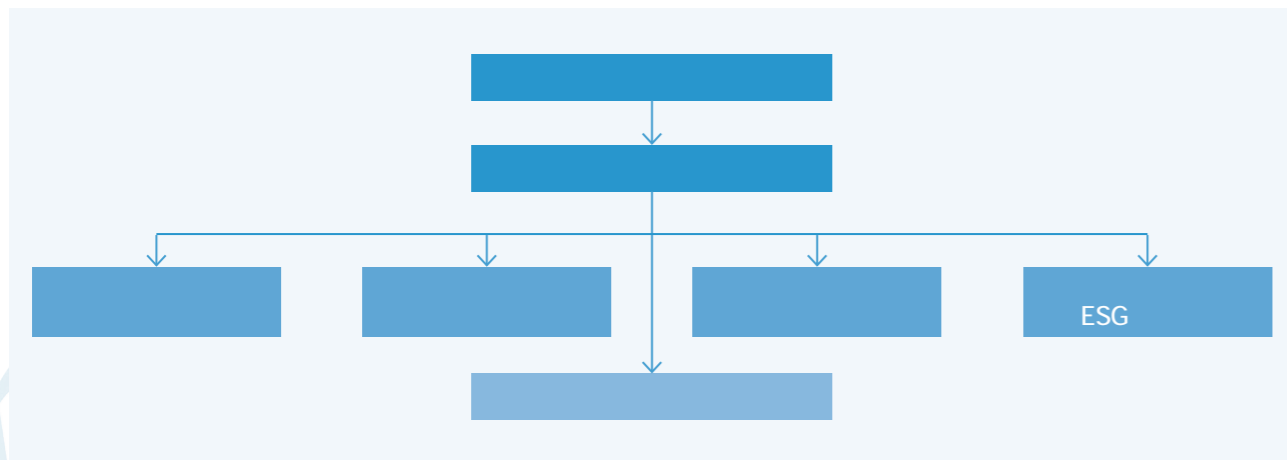
Slide with a blue header bar containing the text "00/100". The slide content is organized into a 2x4 grid of placeholder boxes, each containing a star icon on a pedestal. The text within the boxes is as follows:

" " I HF? E	" " (AI E)
" " " " " "	" " AI
" " " "	" " " "
" " " "	" " " "



A+H

2005	2026 6 23
1	C1
"	"
2	4
4	6
6	4



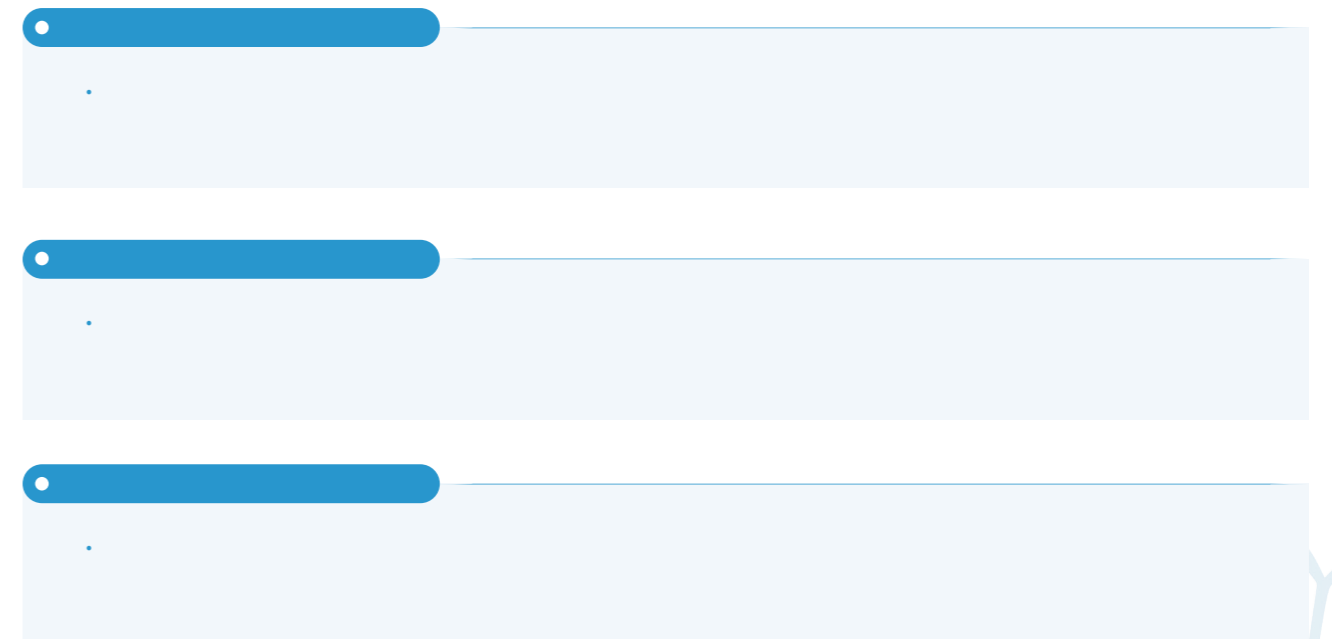
A H

EEG

26

2025

%



2025

2025

EEG

A H

EEG

H

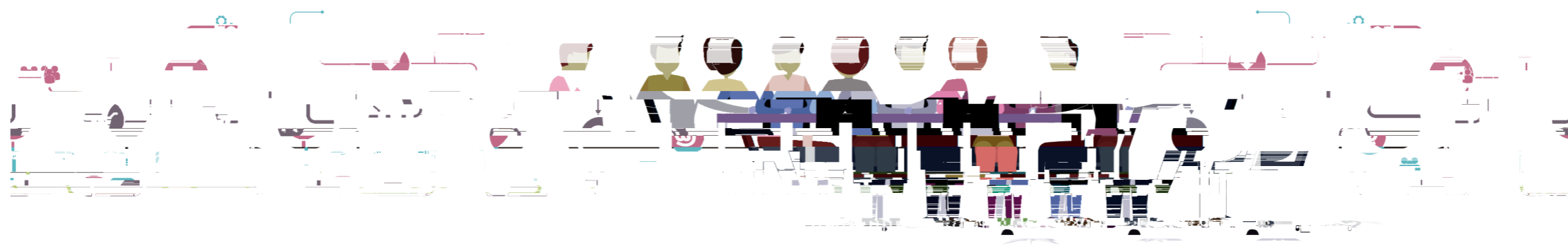
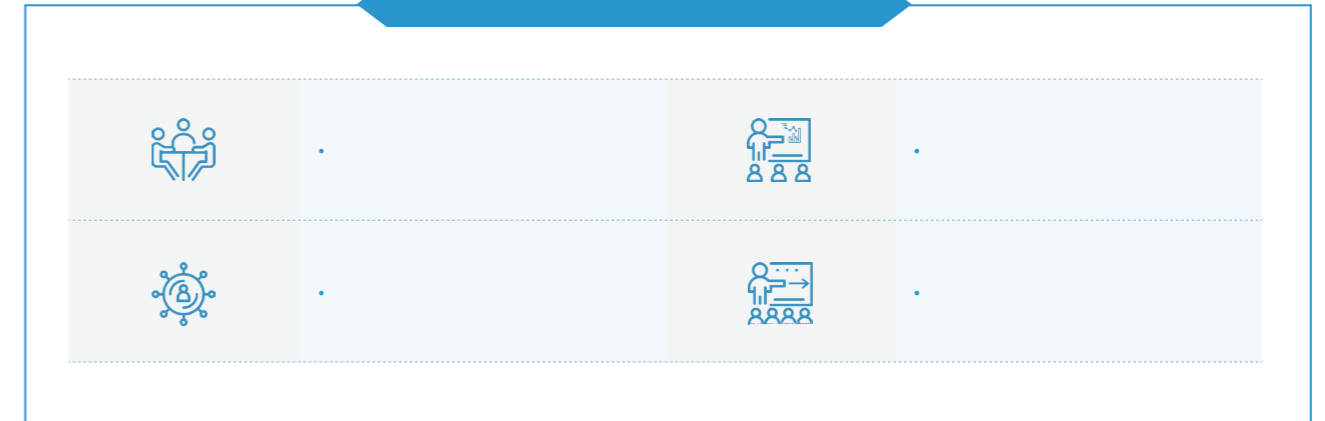
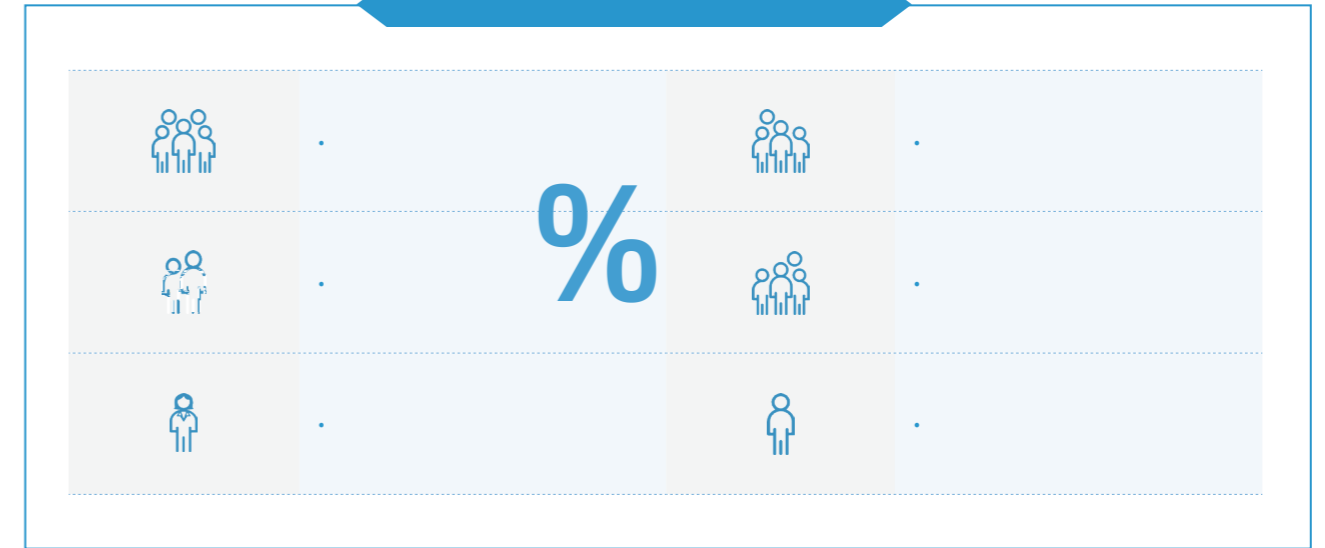
A

2025

A H 308  
176 2024 62.96%

A 209 H 99

%

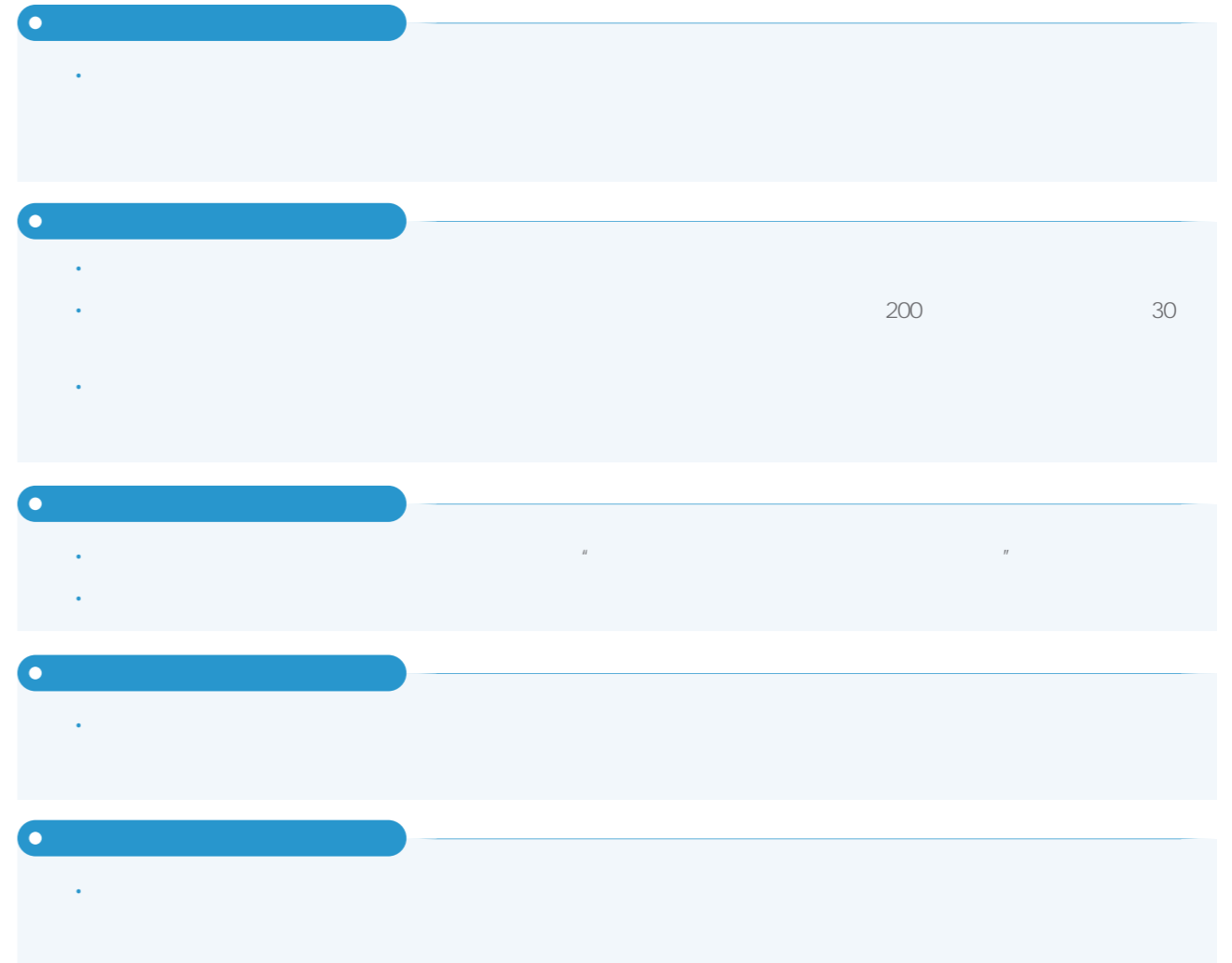


2025

" " "

2025

00/  
00



- 
- 
- 
- 

2025	
✓ AA	" "
✓ E	
✓	" "
✓	EEG
✓	"

%

	2025	100%
	2025	
	2025	100%
	2025	
	2025	100%
	2025	



2025

IEA 37301:2021

【案例】全方位构筑员工合规意识

		AA	“ E ”
2025			1,000
2,470	A H		1,000





2025

第 2 页

2025

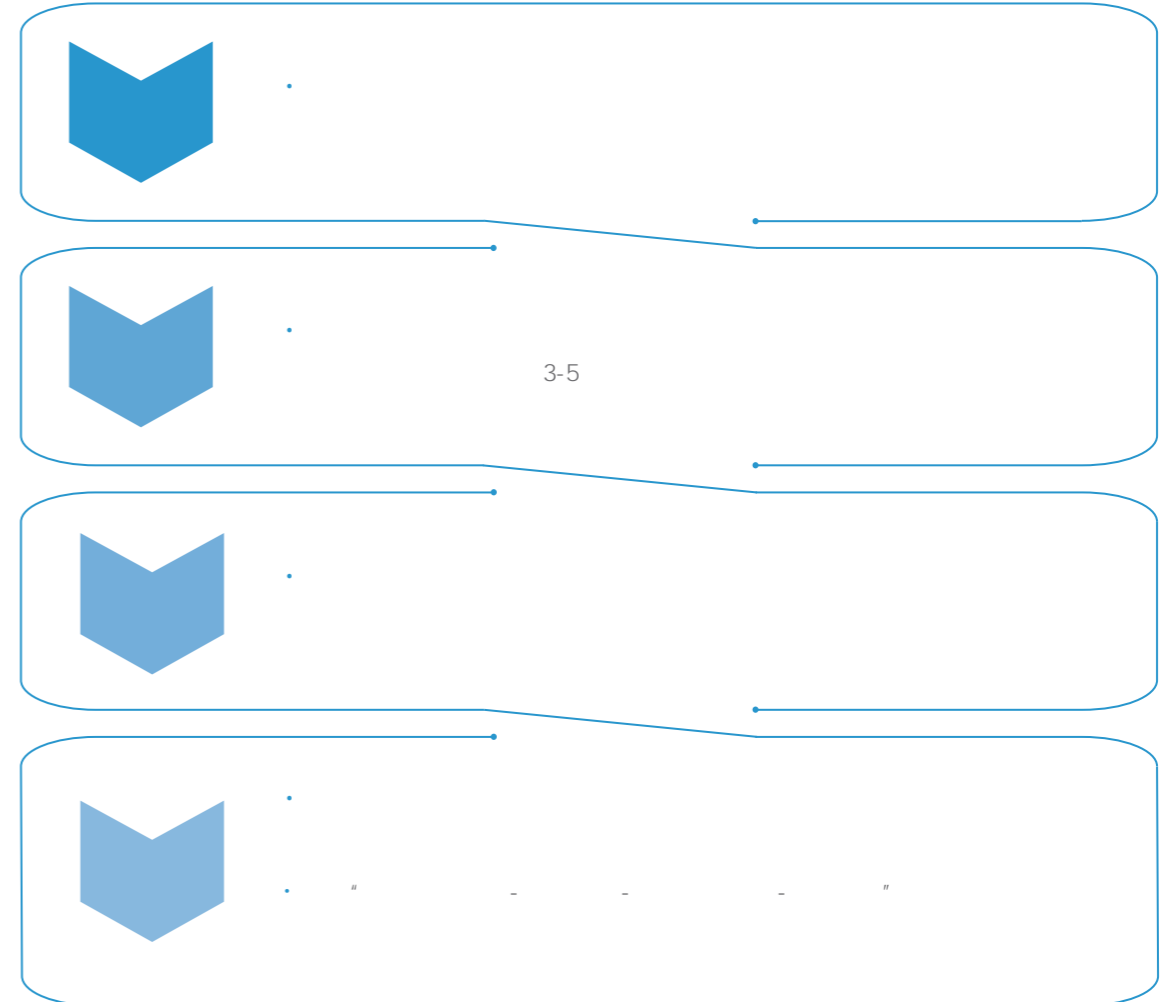
IEA 56005:2020

C@AE

CA

D290 D744

D1234kX



2025

AI

【案例】知识产权系列培训——专利侵权诉讼热点难点解析

2025 年 4 月 17 日

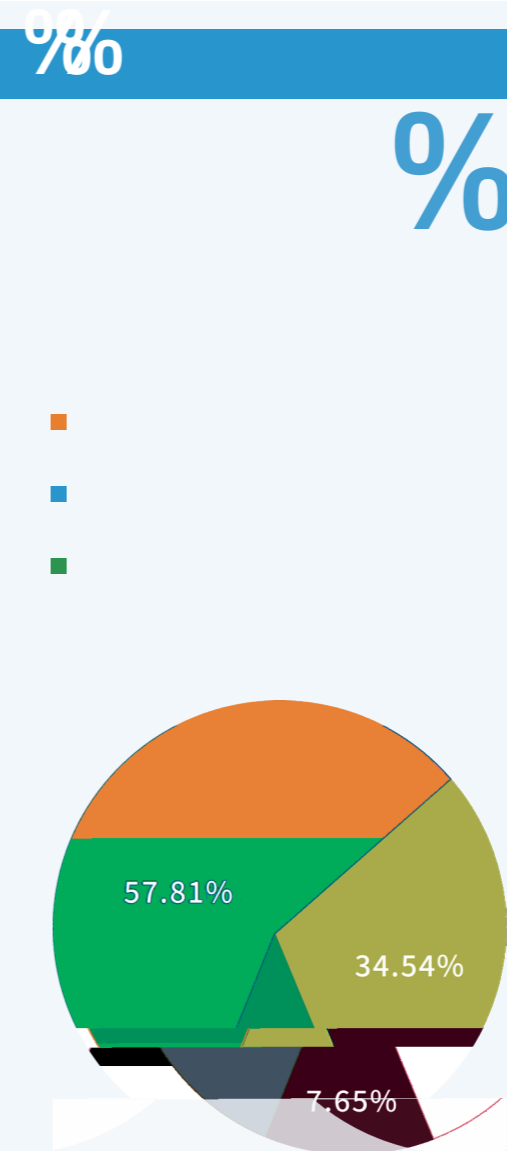


【案例】知识产权系列培训——专利申请“侵权可视化”培训

2025 年 4 月 17 日



AKD ATWUfhWé S` V KWk DWég fe



2025

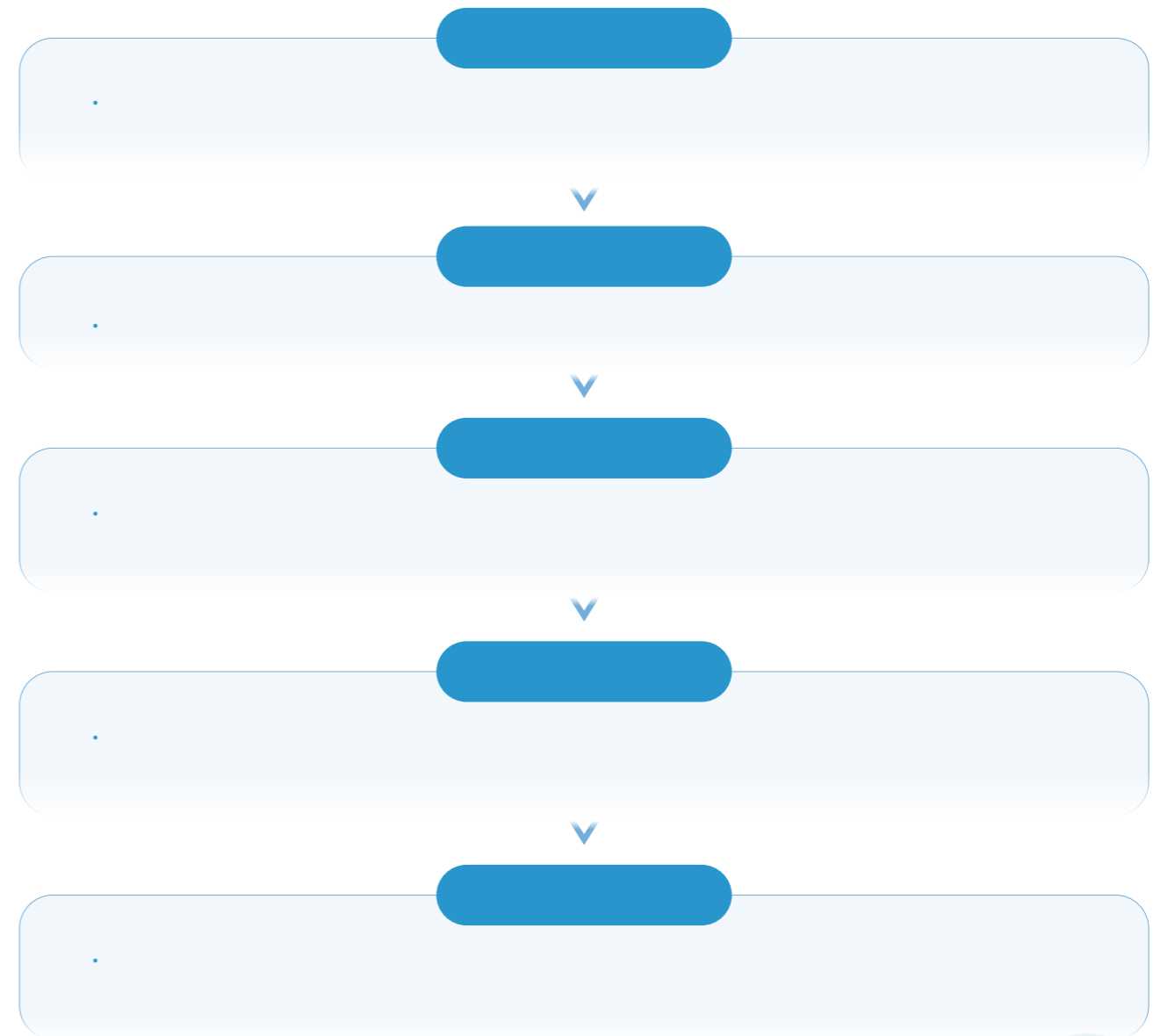
2025

73%

IEA 9001:2015

IAFF 16949:2016

2025



CDCC Cg[U]

DWéba` eWCgS`f`k Ca` fda^

CCC CgS`f`k Ca` fda^C`d`Wé

KICCHIDI KWWb L\_ bda`hW\_ W f`æ`d

Cgefa\_ W`e Ca` VW UW HSd\_ a`k I``ahSf[a` DW[ST`[f`k S` V I` f`W`d`f`k

BF? EA Bda`U`e FS`[gdW? aVWS` V E W`f`e

CDCC BF? EA 8D

A` S`kef`e

CB Ca` fda^B`S`

2025

CCC KICCHIDI

17

100%

771

E`DB E` f`W`d`e`W`D`W`e`ag`d`W`B`S`` ` [ Y

E`CE E`g`bb` [W`d`C`g`S``f`k

E` Y` [ W`d`

CDCC

CDCC



CCC

0.38%

2025	0.38%
2025	<b>%</b>

2025	1.30%
2025	

24

48





EEG



2025

AEA AgfZad| VW EUa` a\_ [UAbWsfad

2025

ED? Egbb^WdDWSf[a` e? S` SYW\_ W f

ESG

EEG

EEG

EEG

EEG

IEA 14001

EEG

CBA? CSdFa` Bad/WdAV`gef\_ W f? WZS` [e\_

%

ESG

2025

2025

CC 080000

GB/F 30512 2014

DaHE DEACH



2025

"

"

"

"

2025

IEA / IEC 27001: 2022

IEA / IEC 27001: 2022

AA

E

%

	2025	2
	2025	
	2025	1
	2025	
	2025	1
	2025	
	2025	99.9%
	2025	





“ ”  
G@GC G` [fW @Sf[a` e G^aTS^Ca\_ bSUF  
AdYS` [| Sf[a` 10

I>A I` fWd Sf[a` S^>STagd

2025







2025 " " 32  
 " " 37 " " 35  
 17

%

• " "

• " "

• " "

YOUNG

•

•

•

【案例】第二届“远航精英班”第九期集训

2025 " " " "



【案例】2025届管培生集训

2025 2025



%

2030	2022	30%	2022	30.68
2025	2022	16%	2025	35.48

" + "

4

5

【案例】 墨西哥跨文化人才发展项目

2025  
? S` SYWte

FZWAVhS` UW Jgd` Wk aXCdae-Ug`fgdW



2025

“ EHE ”

EHE

EHE

2025

IEA 45001

EHE



2025

J

%

•	
•	

•	
•	
•	
•	AGH
•	

%

	2025	
	2025	

	2025		5%	2024	0.30%
	2025	2024	30%	2025	0.21%

2025

2025

" "

2020

2025 11 19

" EA? AE+ I@EBIDA 2025"

44.6

100%

100%

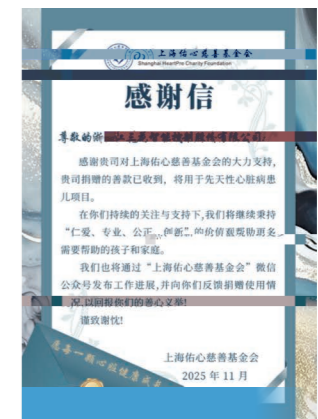
2025

600

20

50

10





2025

C 1 S f W d W S f W W D [e U a e g d W e  
 E2 — IFDE E2  
 2 2

	11-30	0-3	4-10
	•		
	•		
	•		
	•		
	•		

2025

CDB

E U a H S V [e



0%

-	.	.	.	.
-	.	.	.	.
.	HFCe	.	.	.
.	.	.	.	.

.

BEEF>E

- ✓ Ba↑k " 3060" @DC
- ✓ EUa` a\_ k
- ✓ EaU\Wk EEG
- ✓ FW\Z` a`aYk GI B >CCB
- ✓ >Si
- ✓ E` h[da` \_ W f

.

.

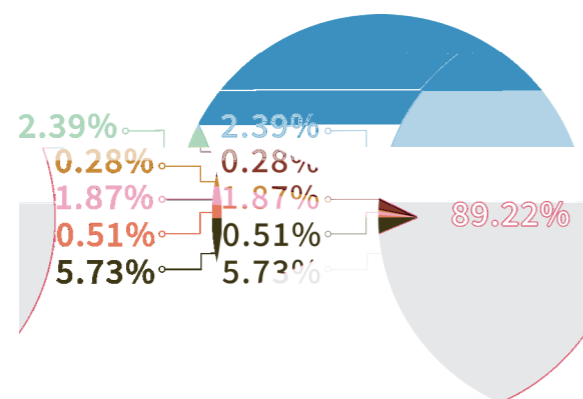
" 2050 " 2030 2020 30% "

" 2050 " 2060 "

%

	2023	2024	2025
+	253,251.65	343,279.37	389,145.86
	32,262.17	32,019.52	34,101.51
	220,989.48	311,259.85	355,044.35
+ /			

%



2025





2025



<ul style="list-style-type: none"><li></li></ul>
<ul style="list-style-type: none"><li></li></ul>
<ul style="list-style-type: none"><li></li></ul>
<ul style="list-style-type: none"><li></li></ul>
<ul style="list-style-type: none"><li></li></ul>
<ul style="list-style-type: none"><li></li></ul>
<ul style="list-style-type: none"><li></li></ul>
<ul style="list-style-type: none"><li></li></ul>
<ul style="list-style-type: none"><li></li></ul>

<ul style="list-style-type: none"><li></li></ul>
<ul style="list-style-type: none"><li>EHE 2025</li></ul>
<ul style="list-style-type: none"><li></li></ul>
<ul style="list-style-type: none"><li></li></ul>
<ul style="list-style-type: none"><li></li></ul>

bH CAD	<ul style="list-style-type: none"><li></li><li></li><li></li><li></li></ul> 
(	<ul style="list-style-type: none"><li></li><li></li><li></li><li></li></ul> 

2025 EHE

2025

%

	2025	0				
	2025					
	2025	100%				
	2025					
	2025	100%				
	2025					
VOCs	2030	2024	10%	2024	0.0050	/
	2025	2024		2025	0.0056	/
	2030	2024	10%	2024	0.0139	/
	2025	2024		2025	0.0131	/
	2025	15%				
	2025					
	2030	2024	10%	2024	0.0363	/
	2025	2024		2025	0.0358	/
	2030	25%				
	2025					
	2030	2024	10%	2024	1.61	/
	2025	2024		2025	1.40	/

	/		
			HA Ce
			/
			BCB

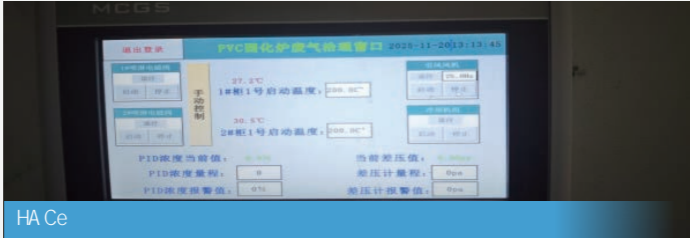
2025

HA Ce

0%

0%

- HA Ce
- HA Ce
- HA Ce



HA Ce


- 
- 

- D141B HA Ce
- EHE
- HA Ce 0.08
- /
- HA Ce

- " "
- " "
- " "

- 
- 
- 





•	"	"
•	"	"
•	"	"
•	"	"
•	"	"
•	"	"
•	"	"
•	"	"

•	EHE
•	"
•	? EDE

•	"	"	"	"
•	"	? EDE	EDE	"
•	EDE	"	"	"

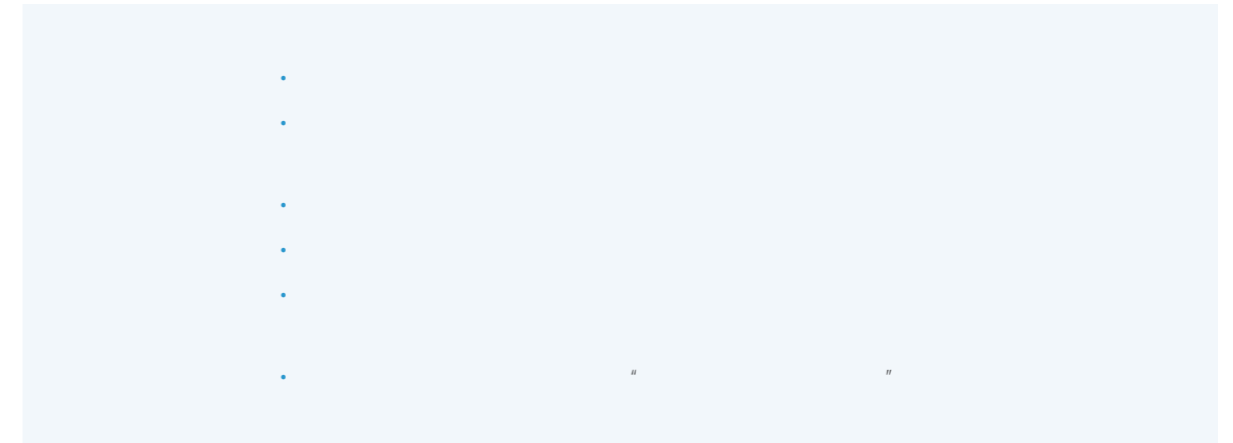
•	"
•	"
•	? EDE

•	"	"
•	"	"
•	? EDE	? EDE

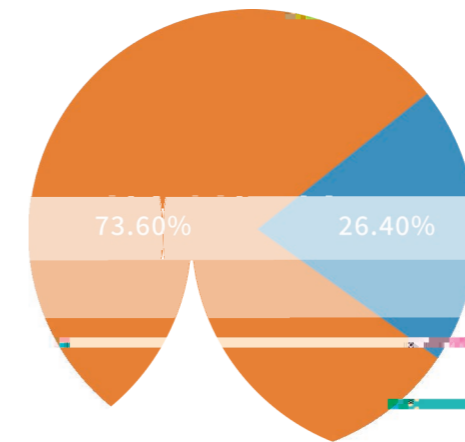
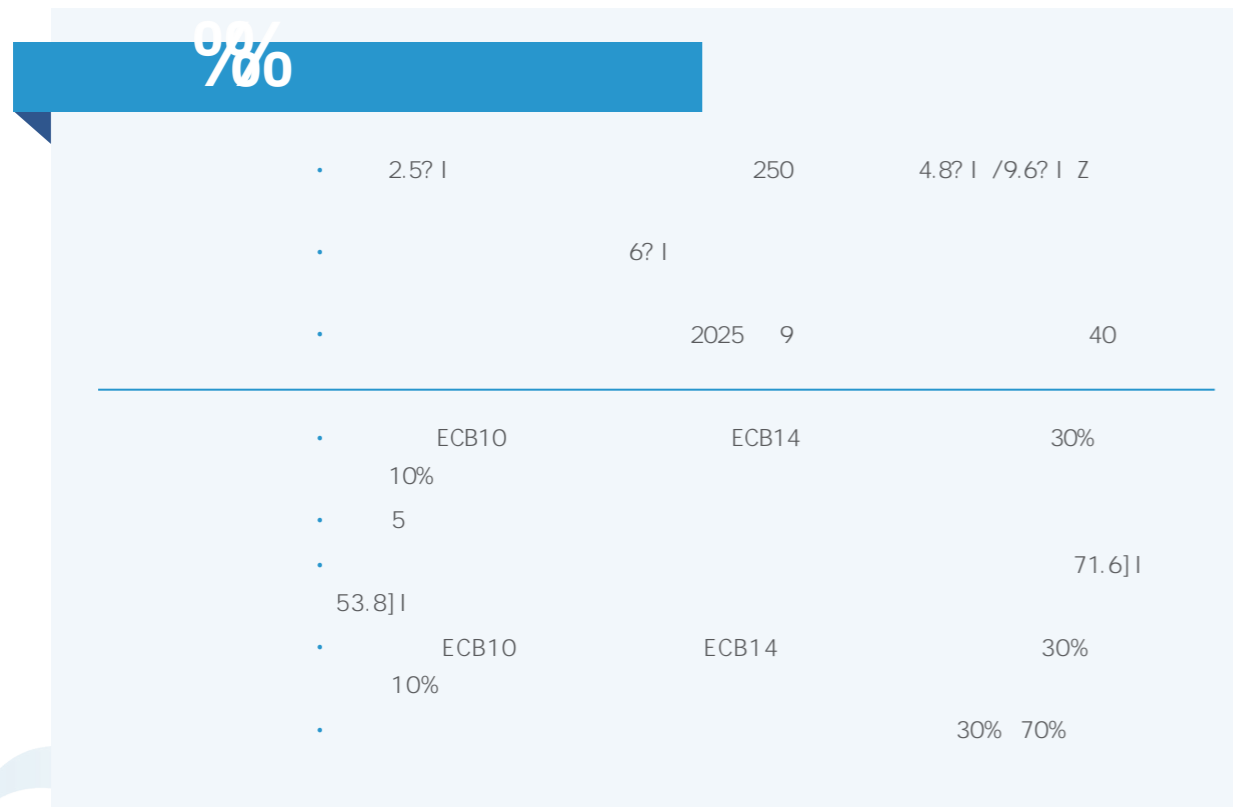


IEA 50001:2018

2025



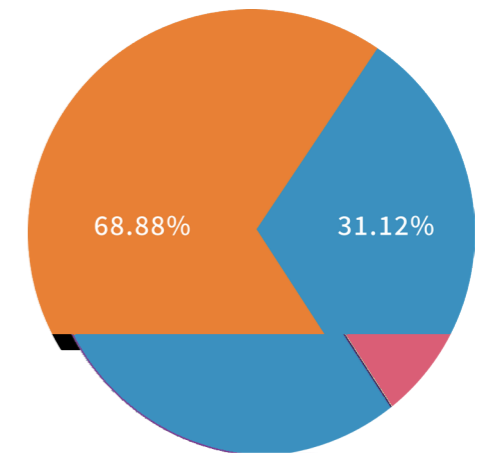
%



2025

2018

2025

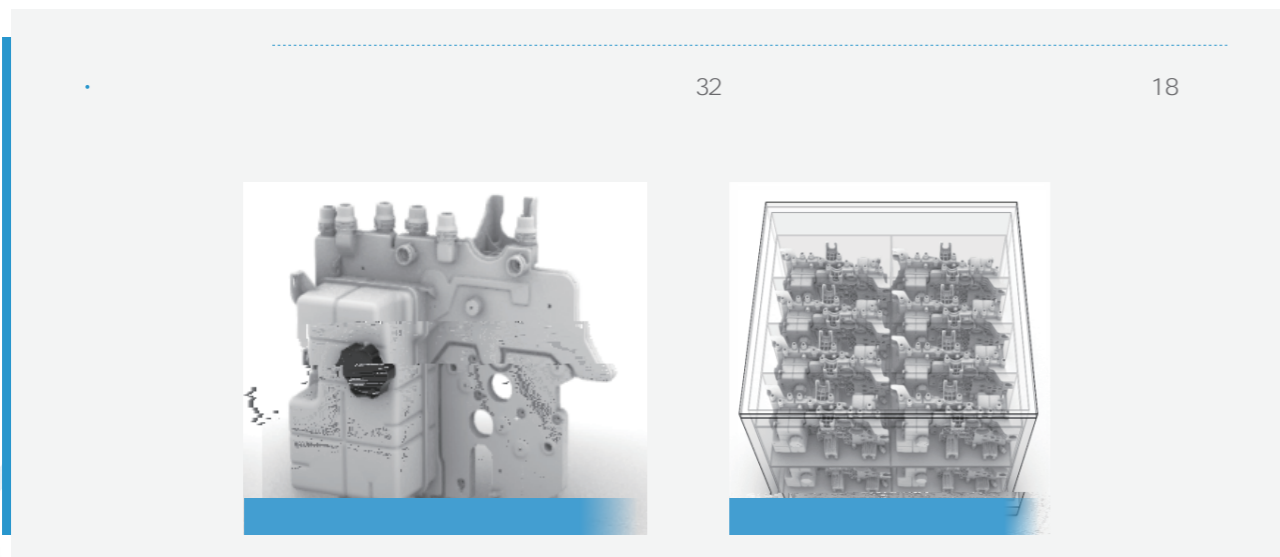
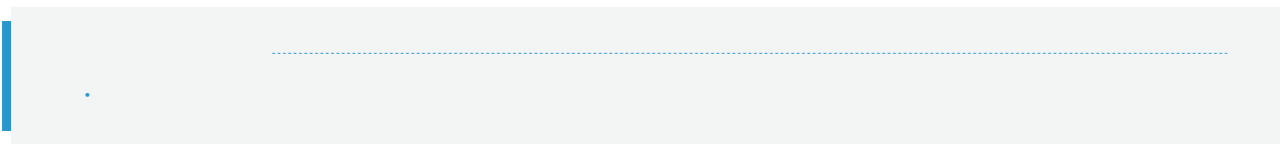
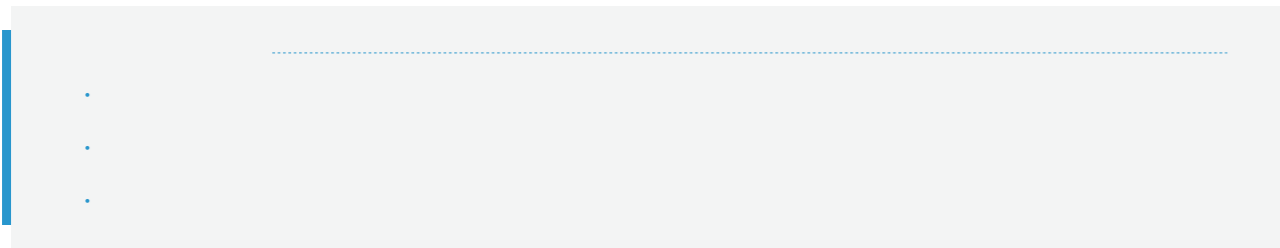
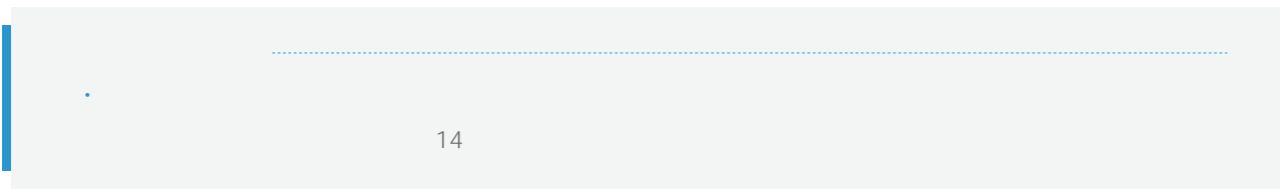
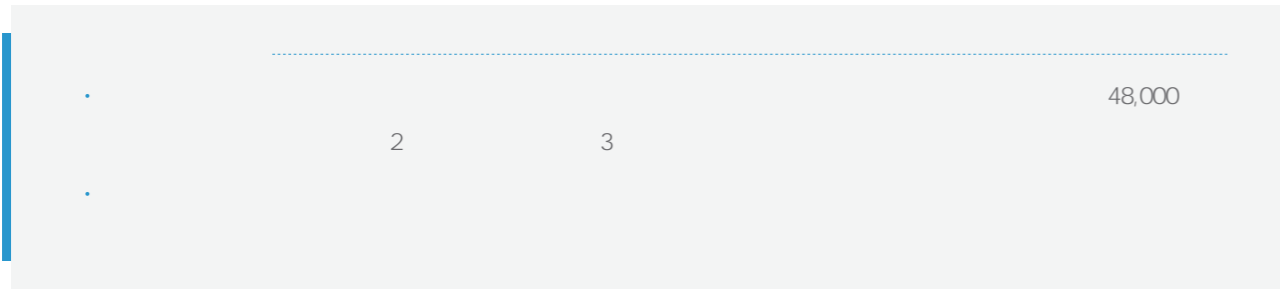


2025

13,056.85



2025



		2023	2024	2025
		3,189,058.48	3,635,474.84	4,940,613.06
		2,455,780.21	2,794,716.45	3,101,174.45
		71,797.96	105,764.05	121,809.45

		2023	2024	2025
	%	/		100
	%			100
				0
				0
				0
				0

1 = / \*100%  
 2 = / \*100%

		2023	2024	2025
		109,683.42	135,179.88	137,407.13
	%			4.43
		3,241	3,578	3,346
	%			17.53
		1,293	1,341	1,029
				576
		3,792	4,252	4,680

$$1 = \frac{\quad}{\quad} \times 100\%$$

$$2 = \frac{\quad}{\quad} \times 100\%$$

		2023	2024	2025
				0
				0
				4
	%			100
				0

$$1 = \frac{\quad}{\quad} \times 100\%$$

		2023	2024	2025
				0
				0
				0

		2023	2024	2025
		7,291	7,564	7,804
		3,870	3,950	4,233
		3,421	3,614	3,571
EEG	%	/	/	73.36
	%			100
	%			100
	%			79.55
	%			100

$$1 = \frac{\quad}{\quad} + \frac{\quad}{\quad}$$

$$2 = \frac{\text{EEG}}{\text{EEG} + \text{B}[\text{^aX? SFWIS'e, BA?}]} \times 100\%$$

$$3 = \frac{\quad}{\quad} = \frac{\quad}{\quad}$$

$$4 = \frac{\quad}{\quad} \times 100\%$$

$$5 = \frac{\text{2025}}{\text{2025}} = \frac{\quad}{\quad}$$

$$6 = \frac{\quad}{\quad} \times 100\%$$

		2023	2024	2025
		17,732	19,787	19,090
		6,551	6,722	6,717
		11,181	13,065	12,373
		13,120	14,429	13,924
		4,612	5,358	5,166
		17,558	18,709	17,989

		2023	2024	2025
		65	1,000	1,037
		109	78	64
	50	1,421	1,651	1,560
	30 50	10,091	10,391	10,458
	30	6,220	7,745	7,072
		13,885	15,434	16,131
		2,128	2,473	2,074
		1,634	1,790	797
		85	90	88
				395
				2
		%		14.77
		%		23.79
1F Q	2	%		



		2023	2024	2025
		/		792.93
	%	/	/	3.63
		/		6.79
	%			100



1 = / \*100%  
 2 = / \*100%  
 3 = / \*100%



		2023	2024	2025
		74,852.32	101,310.86	110,935.23
				0.0358
/		25,978.80	19,401.56	29,285.08
		48,873.52	81,909.30	81,650.15
/		25,484.71	30,900.89	34,519.07
	%	75.32	60.78	57.78
	%	24.68	39.22	42.22
		49,367.61	70,409.98	76,416.16
		14,432,218.06	14,121,650.45	14,995,205.29
		224,397.11	261,873.45	238,506.52
		201,550.51	270,045.87	358,528.39
		402,683.82	615,802.92	704,706.38
		351,541.74	517,264.11	586,195.22
		51,142.08	98,538.81	118,511.16
		165,035.36	180,690.56	105,881.49
				16.82
		4,002,069.09	4,496,122.51	4,353,671.55
				1.40
		4,002,069.09	3,533,936.51	3,536,869.55
			962,186.00	816,802.00
		642,244.00	1,501,076.90	1,005,315.22
				23.09
		16,142.05	14,565.52	15,132.53
		2,523.30	3,214.36	3,676.05
				24.29
			7,415.54	15,880.36

		2023	2024	2025
		253,251.65	343,279.37	389,145.86
				0.13
/		32,262.17	32,019.52	34,101.51
		220,989.48	311,259.85	355,044.35
			344,196.64	377,500.88
		39,575.25	77,049.86	79,875.23

1 2025 2024

2 2022

3 2023 2025 12  
0.6096 fCA /? I Z 0.5306 fCA /? I Z

4 2023 2024 2025 2025

I adV I' bgf-Agfbgf DSfSTSeW I IAD  
GK DEFDA Ca` hWbja` FSUfa de HgT

GE EBA GHG E\_ [ee]a` FSUfa de HgT

1 2025 2024

2 = +

3 = / \*100%



		EEG	
		2	
		2	
		300	50%
		EEG	
		EEG	
		EEG	
		EEG	
		EEG	
		EEG	

C2

2025 年 1 月 1 日

<b>B</b>	
	EEG
<b>C “ ”</b>	
<b>A.</b>	
<b>A1.</b>	
A1	
KBI A1.1	EEG
KBI A1.2M 2025 1 1 0	—
KBI A1.3	EEG
KBI A1.4	EEG
KBI A1.5	EDGe
KBI A1.6	EDGe
<b>A2.</b>	
A2	
KBI A2.1	EEG
KBI A2.2	EEG
KBI A2.3	EDGe
KBI A2.4	EDGe
KBI A2.5	EEG
<b>A3.</b>	
A3	
KBI A3.1	
<b>A4</b>	
A4M 2025 1 1 0	—



	25.S	
	25.T	
	26.S	
	26.T	
III		
	27.S	
	27.T	
	27.U	
IV		
	28.S	EEG
	28.T	EEG
	28.U	EEG
	29.S	EEG
	29.T	EEG
	29.U	EEG
	29.V	EEG
		1
		1

	34.S	
	34.T	
		EEG
	37.S	
	37.T	
	37.U	
	37.V	
	37.W	
	37.X	
	37.Y	
	38.S	EBF[
	38.T	
	38.U	
	38.V	
		EEG
	40.S	
	40.T	1 2
	40.U	
	40.V	
	40.W	

## GRI

	2025 年 1 月 1 日 至 2025 年 12 月 31 日	GDI
GRI 1	GDI 1	2021

GRI		
GDI 2	2-1	
	2-2	
	2-3	
	2-4	EEG
	2-5	
	2-6	
	2-7	EEG
	2-8	
	2-9	
	2-10	
	2-11	
	2-12	
	2-13	EEG
	2-14	
	2-15	
	2-16	
	2-17	EEG
	2-18	
	2-19	
	2-20	
	2-21	
	2-22	
	2-23	

GRI			
GDI 2	2-24		
	2-25		
	2-26		
	2-27		
	2-28		2025
	2-29		
	2-30		
GDI 3	3-1		
	3-2		
	3-3		
GDI 101	101-1		
	101-2		
	101-3		
	101-4		
	101-5		
	101-6		
	101-7		
	101-8		
GDI 102	102-1		1
	102-2		1
	102-3		
	102-4		1
	102-5	1	
	102-6	2	
	102-7	3	
	102-8		
	102-9		



GRI			
GDI 403 2018	403-7		
	403-8		
	403-9		EEG
	403-10		EEG
GDI 404	404-1		EEG
	404-2		
	404-3		EEG
GDI 405	405-1		EEG
	405-2		
GDI 406 2016	406-1		
GDI 407	407-1		
GDI 408	408-1		
GDI 409	409-1		
GDI 410	410-1		
GDI 411	411-1		
GDI 413	413-1		
	413-2		

